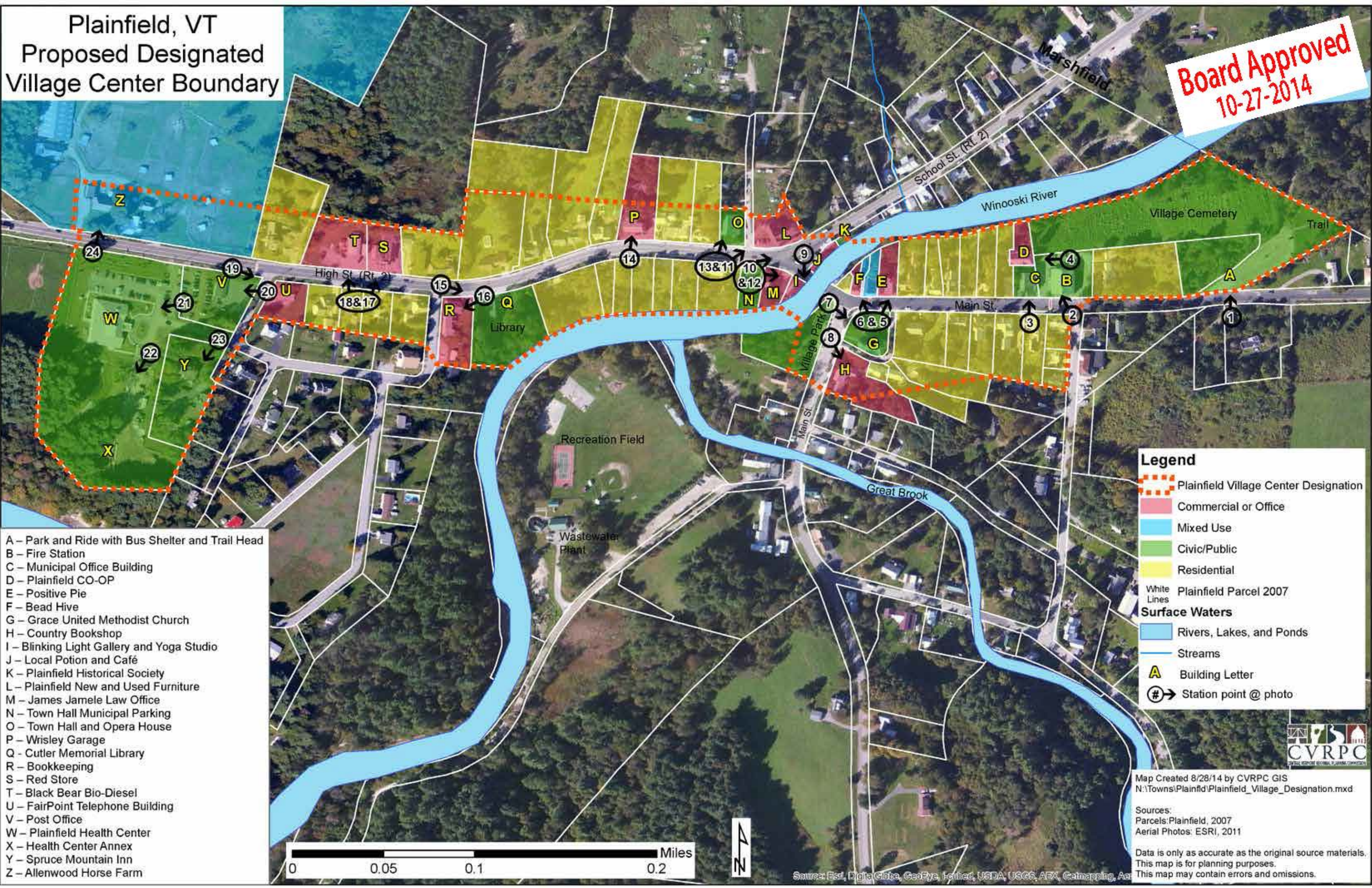


Plainfield, VT  
Proposed Designated  
Village Center Boundary

**Board Approved**  
10-27-2014



- A – Park and Ride with Bus Shelter and Trail Head
- B – Fire Station
- C – Municipal Office Building
- D – Plainfield CO-OP
- E – Positive Pie
- F – Bead Hive
- G – Grace United Methodist Church
- H – Country Bookshop
- I – Blinking Light Gallery and Yoga Studio
- J – Local Potion and Café
- K – Plainfield Historical Society
- L – Plainfield New and Used Furniture
- M – James Jamele Law Office
- N – Town Hall Municipal Parking
- O – Town Hall and Opera House
- P – Wisley Garage
- Q – Cutler Memorial Library
- R – Bookkeeping
- S – Red Store
- T – Black Bear Bio-Diesel
- U – FairPoint Telephone Building
- V – Post Office
- W – Plainfield Health Center
- X – Health Center Annex
- Y – Spruce Mountain Inn
- Z – Allenwood Horse Farm

**Legend**

- Plainfield Village Center Designation
- Commercial or Office
- Mixed Use
- Civic/Public
- Residential
- Plainfield Parcel 2007

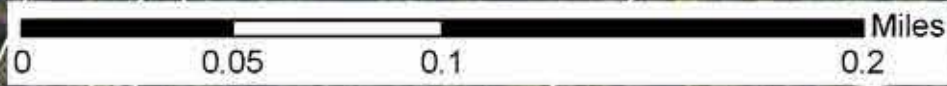
**Surface Waters**

- Rivers, Lakes, and Ponds
- Streams
- Building Letter
- Station point @ photo

Map Created 8/28/14 by CVRPC GIS  
N:\Towns\Plainfld\Plainfield\_Village\_Designation.mxd

Sources:  
Parcels: Plainfield, 2007  
Aerial Photos: ESRI, 2011

Data is only as accurate as the original source materials.  
This map is for planning purposes.  
This map may contain errors and omissions.



Source: Esri, DigitalGlobe, GeoEye, Earthstar, USDA, USGS, Aero, Calmapping, Aer