



US Route 2 & Main Street
Plainfield, Vermont
Public Information Meeting
September 23, 2019
Plainfield Town Office/Opera House



Project Team

Vermont Agency of Transportation

– Erin Parizo



Stantec

– Greg Goyette

Central Vermont Regional Planning Commission

– Dan Currier

Town of Plainfield

– Sasha Thayer, Bram Towbin



Agenda

1. How did we get here?
2. What has been done?
3. Where do we go from here?

Photo by John Predom

Image Source: [Town of Plainfield, VT website](#)



Plainfield House, built in 1830. Former road that served horse and buggies is now US Route 2.
Image provided by Susan Grimaldi, Plainfield Historical Society



Looking towards the Bancroft Inn, built in 1914 after a fire at a time where automobiles are beginning to be mass produced. The intersection of Main Street and what is now US Route 2 is on left.

Image provided by Susan Grimaldi, Plainfield Historical Society

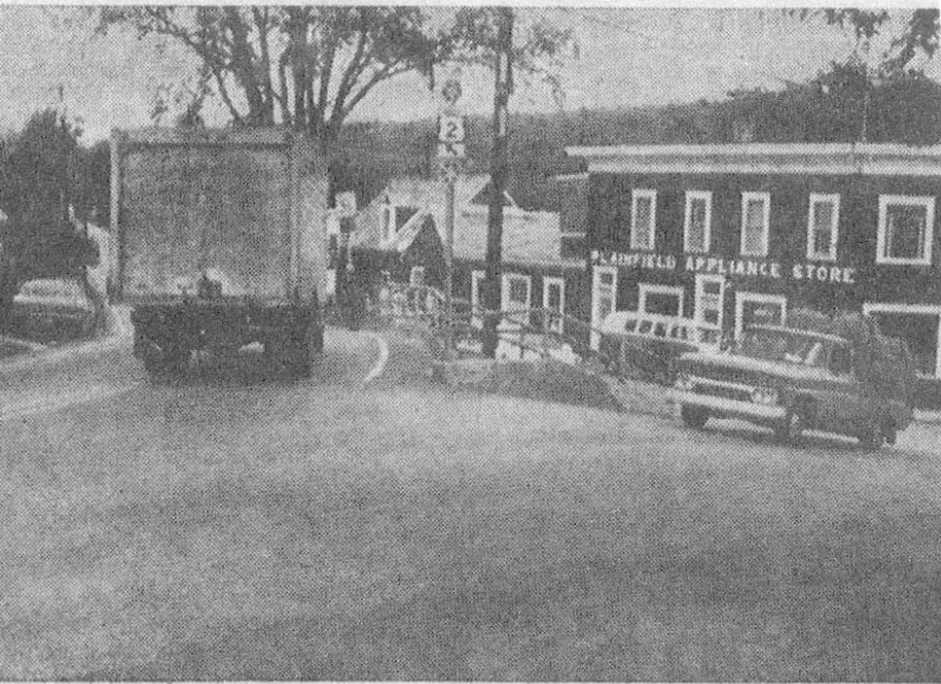


Martin Building on the left, built in 1919
Image provided by Susan Grimaldi, Plainfield Historical Society



PLAINFIELD

Plainfield Inn (formerly Plainfield House and Bancroft Inn) on the right. US Route 2 is paved and serves automobiles. Main Street located to the left and just off the picture. Image provided by Susan Grimaldi, Plainfield Historical Society



PLAINFIELD'S CONTROVERSIAL CORNER — At the Plainfield Inn has been “an irritating in the community for a long time,” according to a Plainfield selectman. The town’s Board of Selectmen has appealed to the State Highway Department to take measures to decrease the danger and “peak-a-boo aspects of the corner — without concrete results. Drivers moving onto Route 2 see a guard rail instead of oncoming cars from the steeply sloped side street.

10-20-1969



Need for Improvements

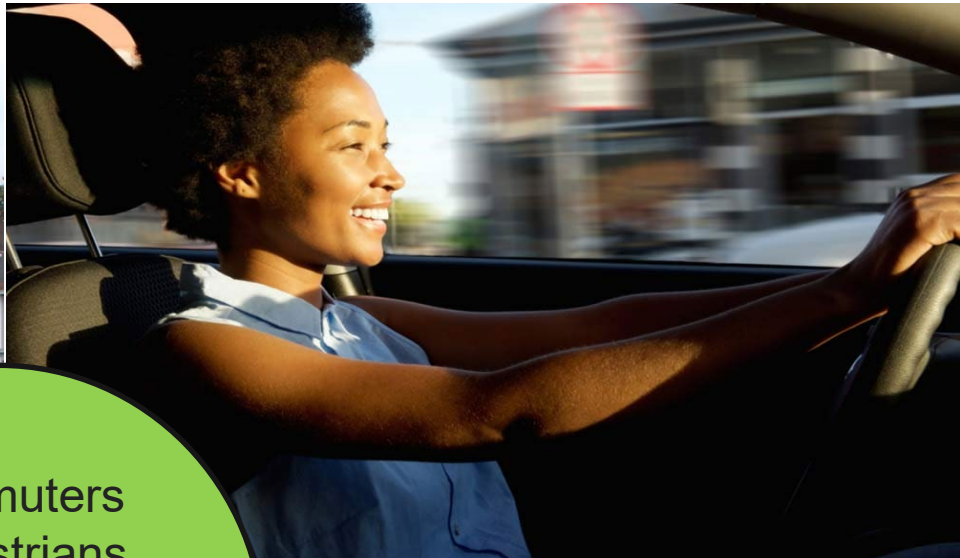
Image Sources: (L) News clipping from “Daily” Times Argus, October 20, 1969 provided by Bram Towbin; (R) Photo taken by Bram Towbin whilst trying to pull out into Route 2 from Main Street

Who does this intersection serve?



US Route 2

← To Montpelier/I-89



US Route 2

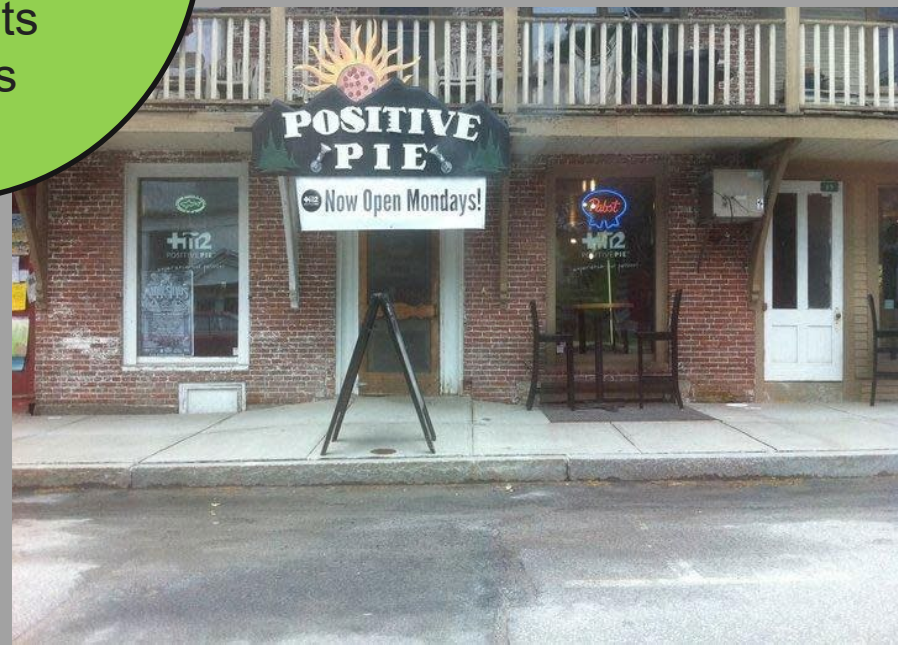
To St. Johnsbury/I-91 →

Commuters
Pedestrians
Customers
Employers
Residents
Visitors



Plainfield Village →

Main Street



What are the challenges?



US Route 2

← To Montpelier/I-89



US Route 2

To St. Johnsbury/I-91 →

Awkward Geometry
Steep Grade
Poor Sight Distance
Traffic Volumes
Regional Corridor
Historic District
Not a Lot of Room!



Plainfield Village →

Main Street



Evaluating Alternatives



Safety



Property Impacts



Traffic Operations



Constructability



Alternative Transportation



Cost

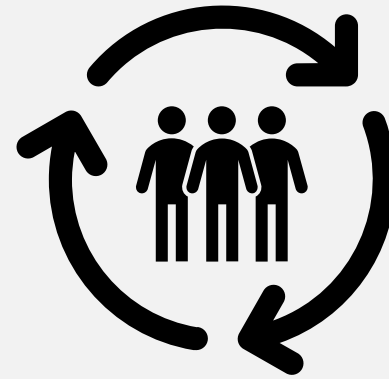


Construction
Traffic Management

What has been done?

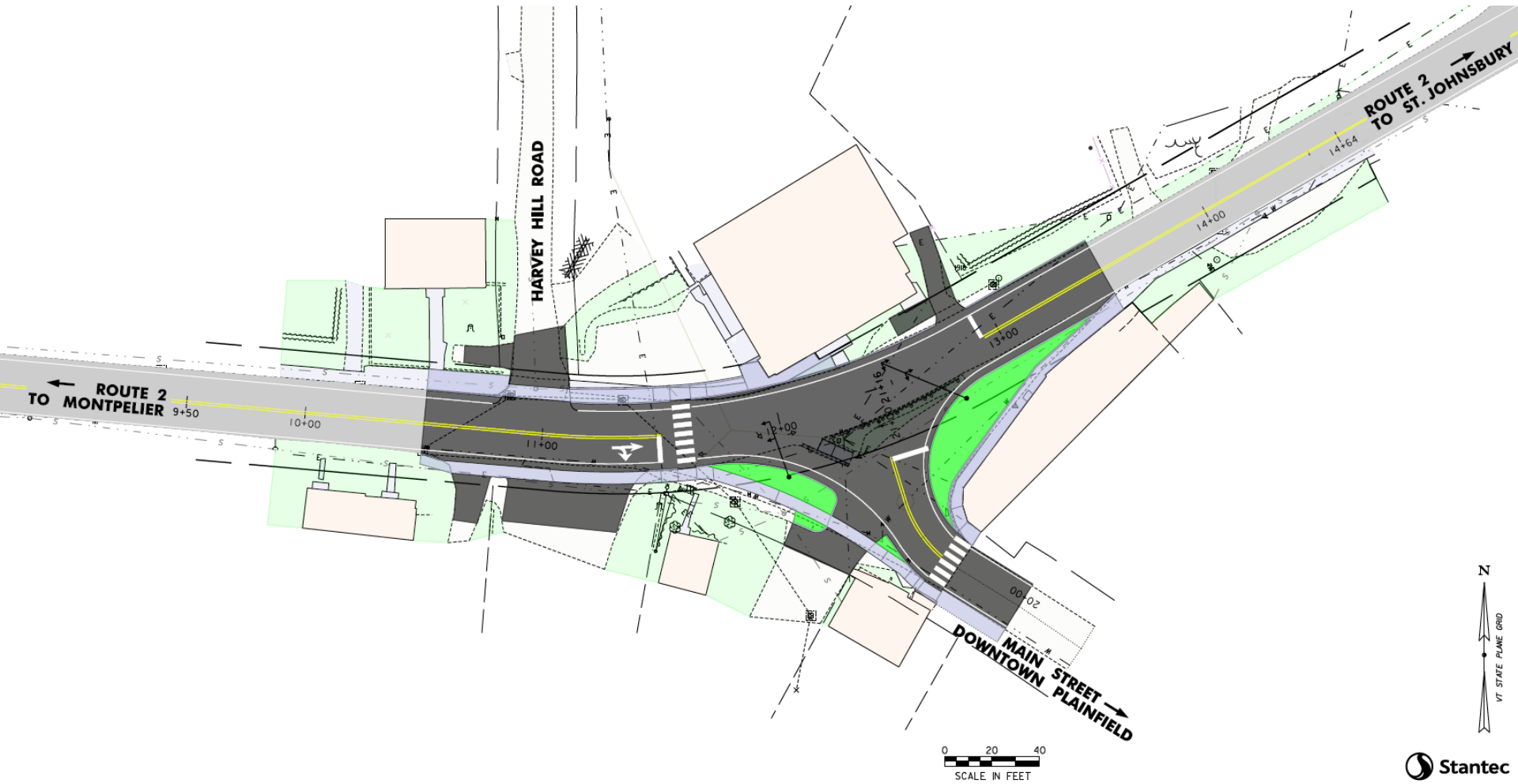
- Selection of Preferred Improvements
 - VTrans, Town, Regional Planning Commission

- Development of 30% Design Plans



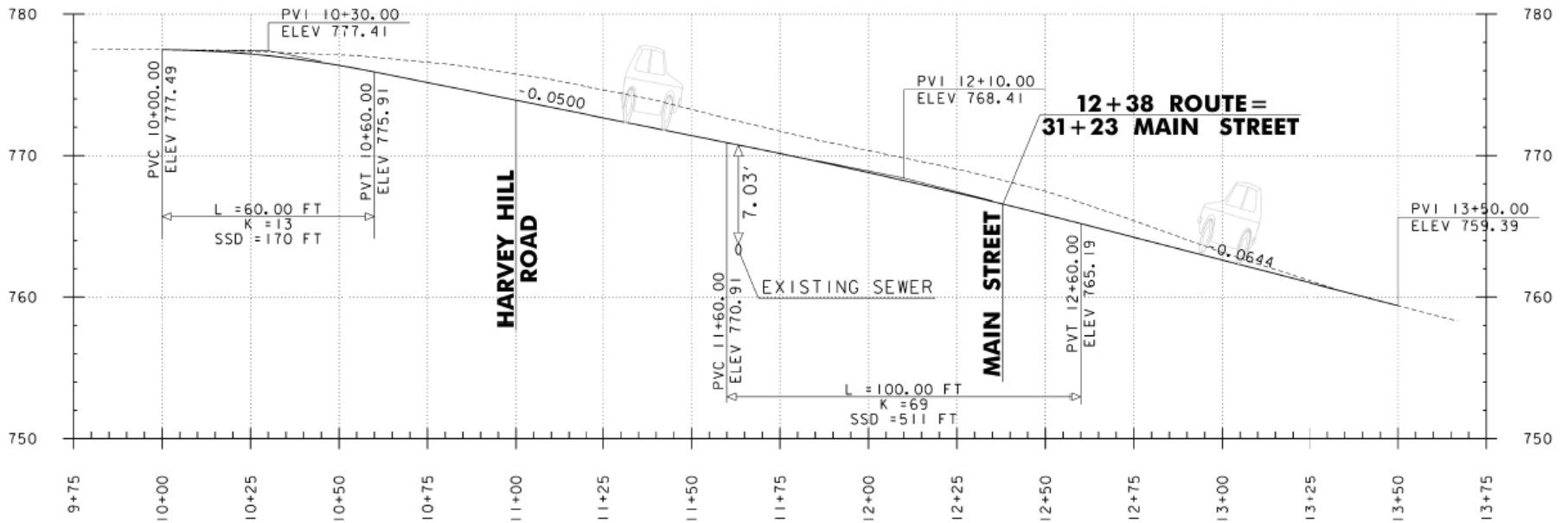
- Stakeholder Meetings
 - Property Owners, Fire Chief, Town Staff

Project Improvements



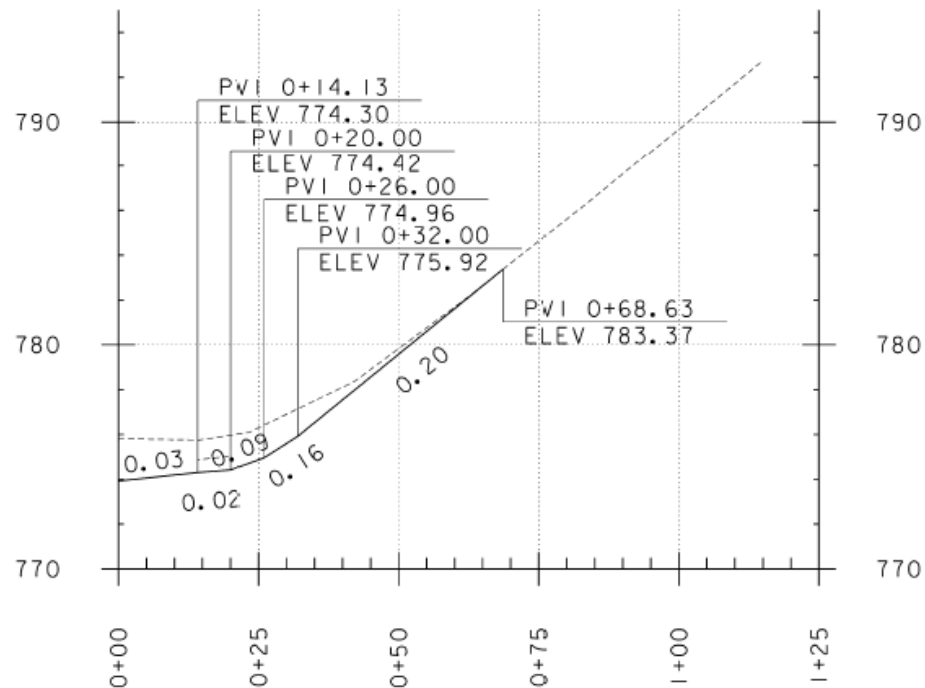
Project Improvements

Route 2

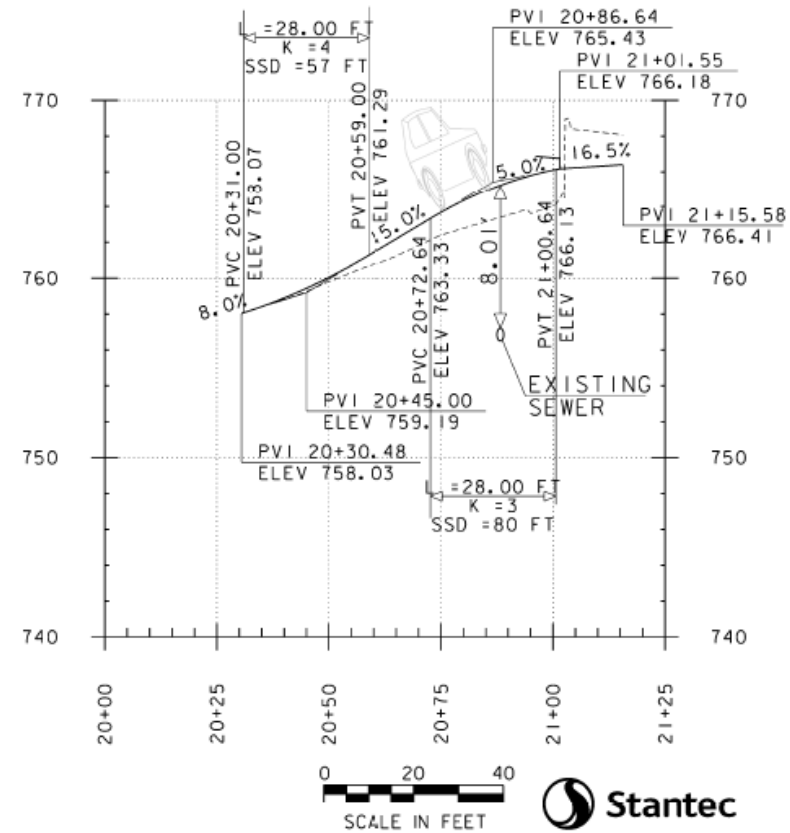


Project Improvements

Harvey Hill Road



Main Street



Additional Design Considerations

- Constructability?
- Traffic Management?
- Emergency Access?
- Mitigating Property Impacts (historic and otherwise)
- Utility Relocations – Aerial/Underground/Municipal
- Ledge?
- Concurrent Construction?
- Temporary and Permanent Easements

Where do we go from here?



Public
Informational
Meeting
Tonight

30% Plans
Update
Fall 2019

60% Plans
2020

Where do we go from here?

Right-of-Way
2021 - TBD

100% Plans/Bid
Advertisement
TBD

Construction
2023(?)